

CentOS 7 Goslinux 2.0

- 2.0
-
-
-
- -

2.0

2.0 .

, USB- - .

Terminal.

2.0 :

```
$ pcsc_scan
```

2.0 , .

2.0, .

pcscd :

```
$ sudo service pcscd stop
```

, :

```
sudo yum install ccid opensc pam_pkcs11 gdm-plugin-smartcard p11-kit
```

, openssl 1.1

[pam](#) /usr/lib64/security (/lib64/security goslinux)

:

```
sudo chmod 644 /usr/lib/x86_64-linux-gnu/librtpam.so.1.0.0
```

librtpkcs11ecp.so :

```
sudo rpm -i librtpkcs11ecp_1.9.15.0-1_x86_64.rpm
```

, :

```
pkcs11-tool --module /usr/lib64//librtpkcs11ecp.so -T
```

, ,

OpenSC 0.19.0.

<https://github.com/OpenSC/OpenSC/>

```
pkcs11-tool --module /usr/lib64/librtpkcs11lecp.so --keypairgen --key-type GOSTR3410-2012-256:B -l --id 45
```

openssl :

```
openssl version -a
```

rtengine,

openssl.cnf :

```
#
openssl_conf = openssl_def
...
#
# OpenSSL default section
[openssl_def]
engines = engine_section
# Engine section
[engine_section]
rtengine = rtengine_section
# Engine rtengine section
[rtengine_section]
engine_id = rtengine
dynamic_path = /path/to/engine/librtengine.so
MODULE_PATH = /usr/lib64/librtpkcs11lecp.so
RAND_TOKEN = pkcs11:manufacturer=Aktiv%20Co.;model=Rutoken%20ECP
default_algorithms = CIPHERS, DIGEST, PKEY, RAND
```

:

```
openssl req -utf8 -x509 -keyform engine -key "pkcs11:id=E" -engine rtengine -out cert.crt
```

:

```
pkcs11-tool --module /usr/lib64/librtpkcs11lecp.so -l -y cert -w cert.crt --id 45
```

(, ID = 45)

```
pkcs11-tool --module /usr/lib64/librtpkcs11lecp.so -r -y cert --id {id} --output-file cert.crt
```

PEM

```
openssl x509 -in cert.crt -out cert.pem -inform DER -outform PEM
```

```
mkdir ~/.eid  
chmod 0755 ~/.eid  
cat cert.pem >> ~/.eid/authorized_certificates  
chmod 0644 ~/.eid/authorized_certificates
```

/etc/pam.d/system-auth

```
sudo vim /etc/pam.d/system-auth
```

:

```
auth sufficient librt pam.so.1.0.0 /usr/lib64/librtpkcs11lecp.so
```

```
su oleg
```

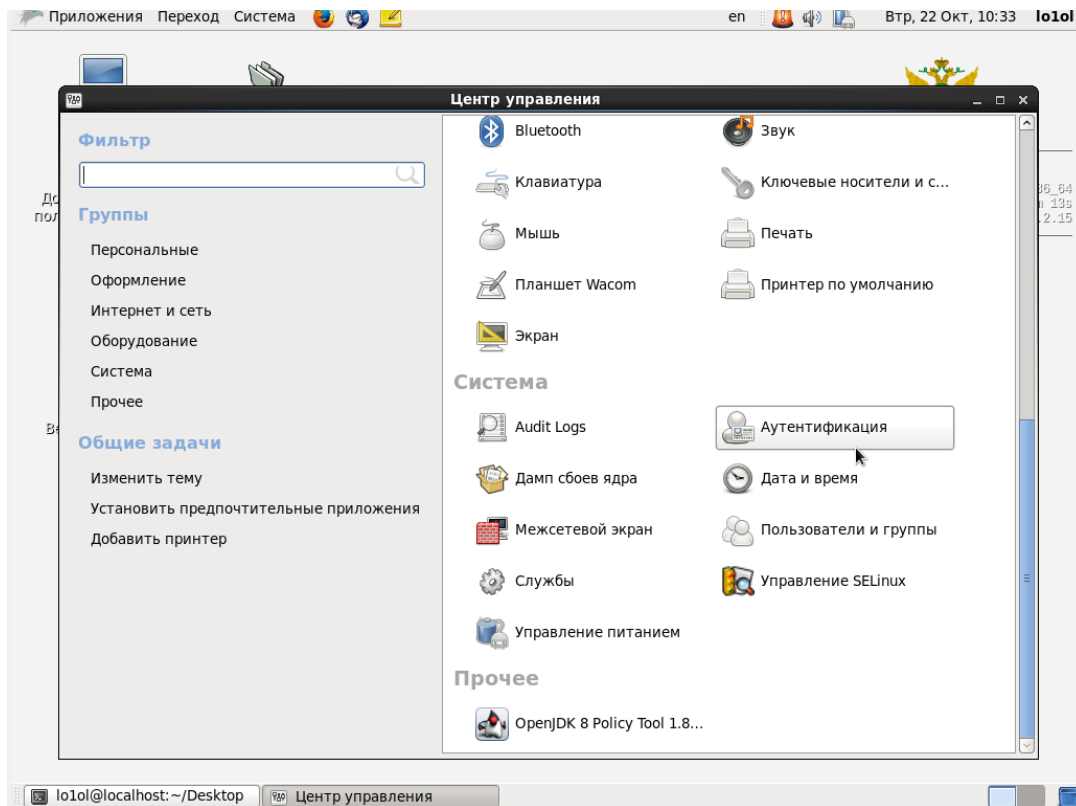
, , - . , , /var/log/messages

-

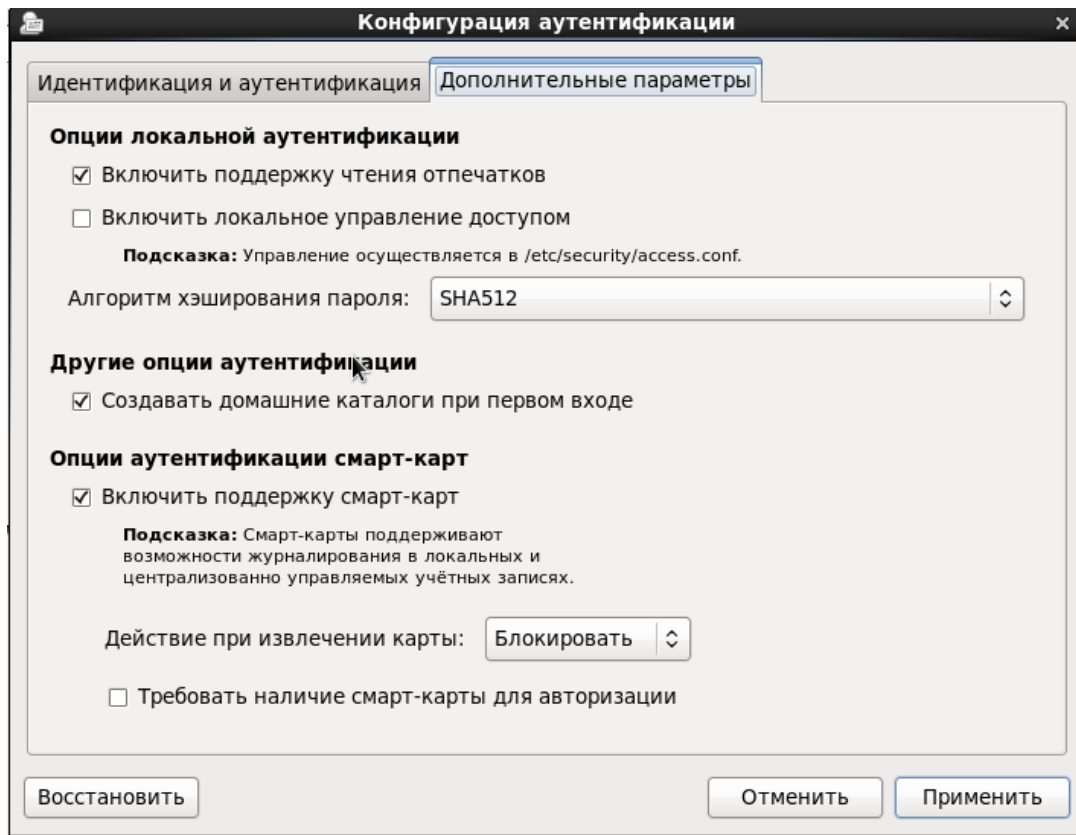
Goslinux

, , ;

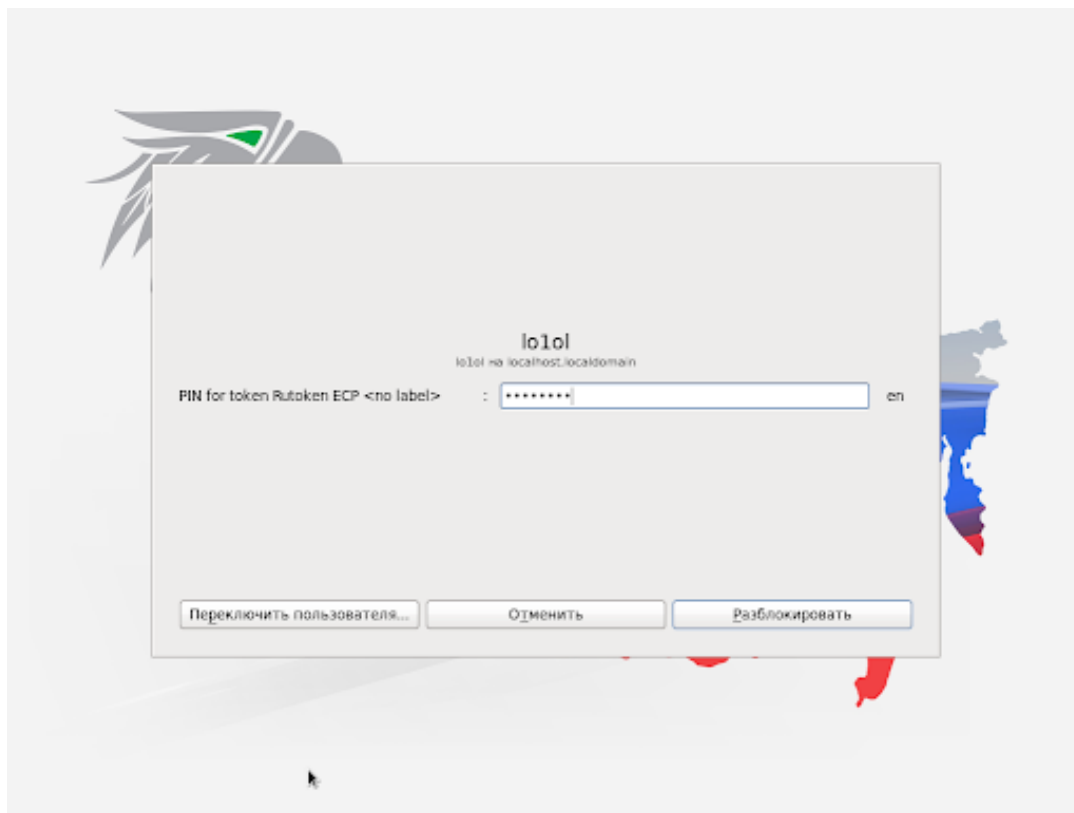
1.



2. -



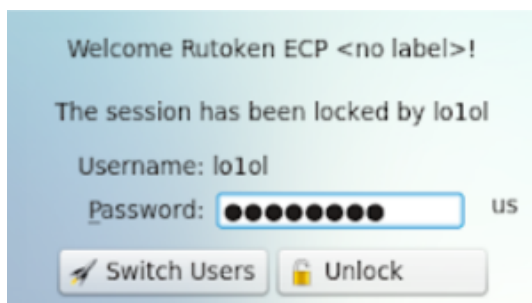
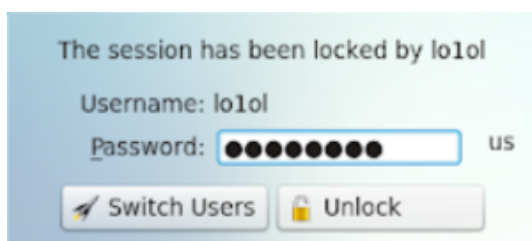
3.



CentOS 7

KDE.

```
autoconfig --enablesmartcard
```



Checking signature

The session has been locked by lo1ol

Username: lo1ol

Password: us

 Switch Users

 Unlock