

PU1028

Initializing Rutoken authentication dongle

Please note that all the contents of Rutoken device will be permanently erased during the initialization.

All the contents of Rutoken ECP 2.0 Flash data card will be erased during the initialization if user PIN has been blocked before.

Rutoken Disk software will be completely disabled after the initialization.

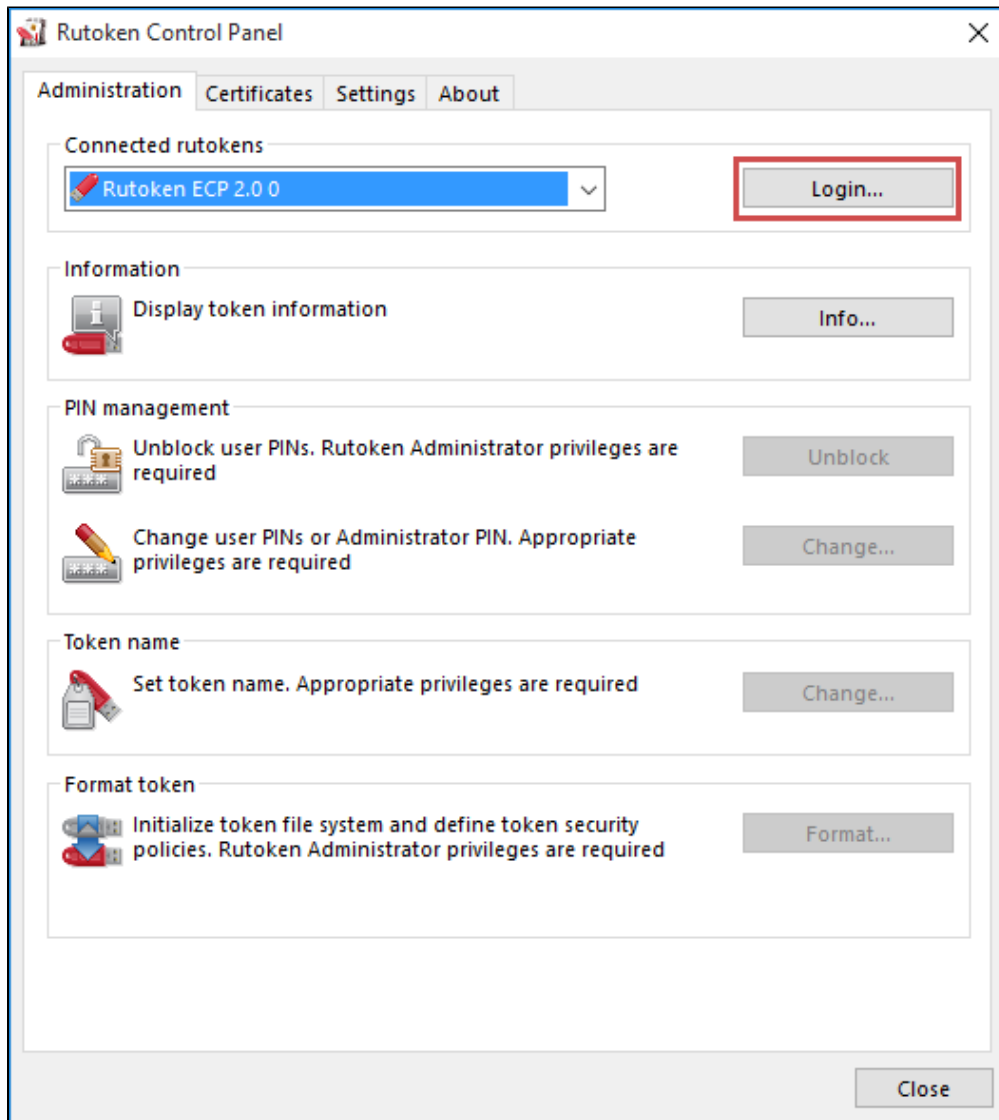
To restore Rutoken Disk software after the initialization please follow the manual.

*It's impossible to reinitialize blocked Rutoken device of earlier versions (marked as **0B0Z** or **0D3Z** on the device enclosure), you need to purchase a new one.*

Please follow the manual to install or update Rutoken drivers.

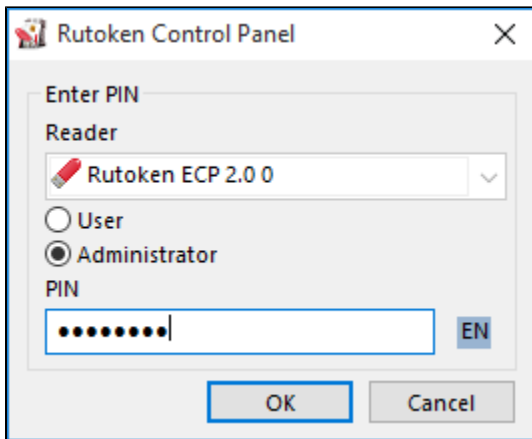
Click **Rutoken Control Panel** icon on Windows desktop or type **Rutoken Control Panel** in Windows search panel to start it.

When **Rutoken Control Panel** is opened select **Administration** tab. Then click the **Login** button in upper right corner.

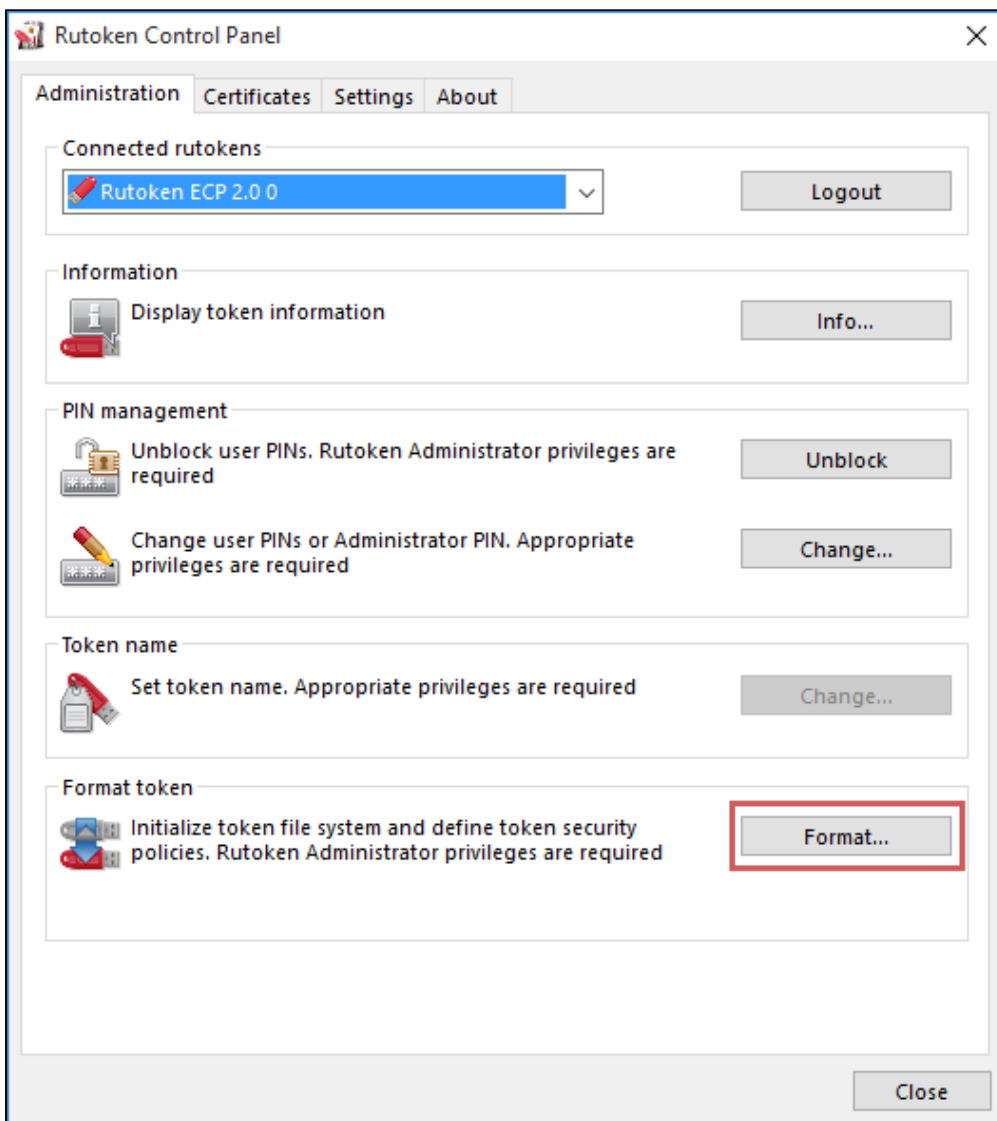


logon dialog choose the proper Rutoken device by selecting it in the dropdown box and tap **Administrator** radio button. Then enter Admin PIN and press **OK**.

The default Admin PIN is **87654321**.

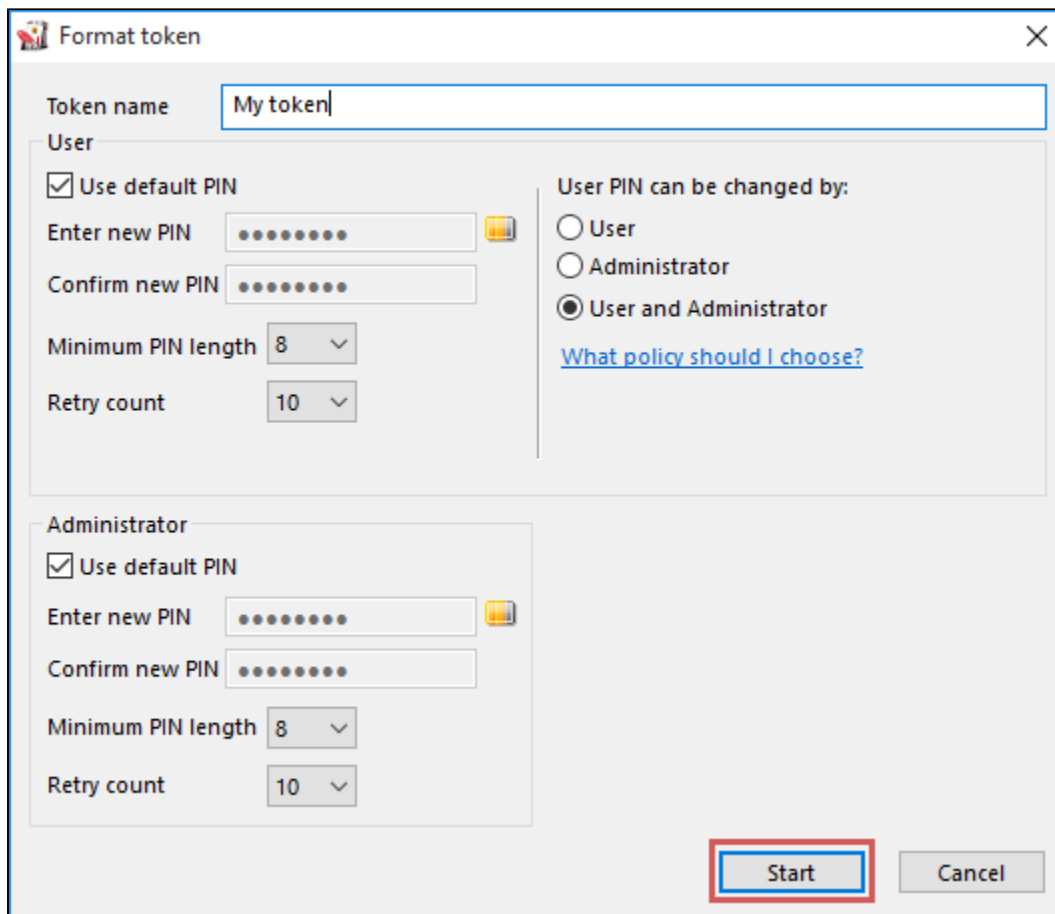


If Admin PIN is lost, you need to block Rutoken device by entering invalid PIN value so many times as required. The invalid PIN length should be greater than 6.



After **Format...** button is enabled click it to open **Format token** dialog box.

In this dialog you may set the new values of token name, User and Admin PIN's and permit the account keepers to change user PIN.



The 'Format token' dialog box is shown with the title bar 'Format token' and a close button. It contains two main sections: 'User' and 'Administrator'. The 'User' section has a 'Token name' field with 'My token' entered, a 'Use default PIN' checkbox checked, and fields for 'Enter new PIN' and 'Confirm new PIN' (both masked with dots). It also has dropdowns for 'Minimum PIN length' (set to 8) and 'Retry count' (set to 10). To the right of the 'User' section, there is a section titled 'User PIN can be changed by:' with three radio button options: 'User', 'Administrator', and 'User and Administrator' (which is selected). Below these options is a blue hyperlink that says 'What policy should I choose?'. The 'Administrator' section is identical to the 'User' section, with its own 'Use default PIN' checkbox checked and corresponding PIN fields and dropdowns. At the bottom right, there are two buttons: 'Start' and 'Cancel'. The 'Start' button is highlighted with a red rectangular border.

Format token

Token name: My token

User

☒ Use default PIN

Enter new PIN: [masked]

Confirm new PIN: [masked]

Minimum PIN length: 8

Retry count: 10

User PIN can be changed by:

☐ User

☐ Administrator

☒ User and Administrator

[What policy should I choose?](#)

Administrator

☒ Use default PIN

Enter new PIN: [masked]

Confirm new PIN: [masked]

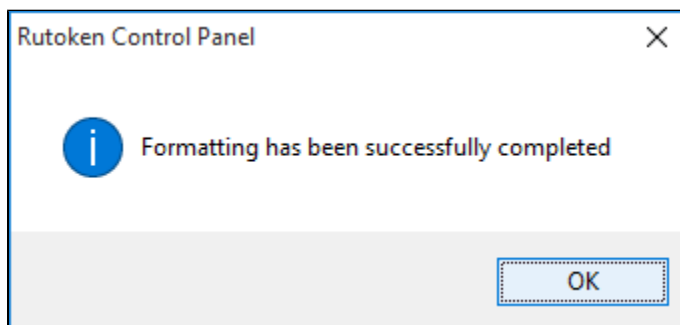
Minimum PIN length: 8

Retry count: 10

Start Cancel

Now click the **Start button** to process the initialization of Rutoken device. Click **Yes** to skip the warning dialog on **No** to prevent the operation.

Do not disconnect the Rutoken device or turn off the computer before the initialization is complete.



The 'Rutoken Control Panel' message box has a title bar 'Rutoken Control Panel' and a close button. It features a blue information icon (a circle with an 'i') on the left. To the right of the icon, the text 'Formatting has been successfully completed' is displayed. At the bottom right, there is a button labeled 'OK'.

Rutoken Control Panel

Formatting has been successfully completed

OK